

Lifecycle visualization illustrate

Creating technical illustrations that are associative to managed CAD information

Benefits

- Reduce cost and time to create technical illustrations by leveraging existing JT data
- Improve clarity and eliminate errors with easy-to-use 3D tools for outline capture; a simple double-click accesses 3D geometry in Teamcenter lifecycle visualization directly from the final illustration
- Reduce or eliminate rework with instant updates as changes ripple through the change management process
- Eliminate shop floor paper and revision-control issues by delivering managed illustrations in lightweight web format
- Streamline technical illustration through an integrated toolkit of graphics, text editing and layout that eliminates cumbersome and error-prone handoffs between applications
- Deliver illustrations in time for launch by starting earlier than ever before without waiting for final design

Summary

Teamcenter® software's lifecycle visualization suite provides an add-on illustrate option that you can leverage to establish an easy-to-use layout environment. You can use this environment to create illustrations for work instruction sheets, maintenance manuals, parts catalogs or any other technical document. The illustrate option enables companies to reduce time, cost and training because it leverages the same 2D and 3D investments created by their design group. Changes to design data are synchronized with the content in the illustrate environment so that documentation projects can begin earlier and errors can be reduced.

Use your design data directly

Teamcenter's lifecycle visualization suite provides the illustrate add-on option to support the technical illustration processes used by many of the world's most successful product makers. The illustrate option allows product development companies to create clear and accurate illustrations to aid downstream disciplines throughout the enterprise.

The illustrate option leverages the existing design knowledge generated throughout your product definition processes as input. CAD files represent the majority of this information in JT™ format generated by CAD systems like Siemens PLM Software's NX™ or Solid Edge® software, but can include JT data generated by any other major CAD system. The illustrate option enhances your 2D and 3D data with

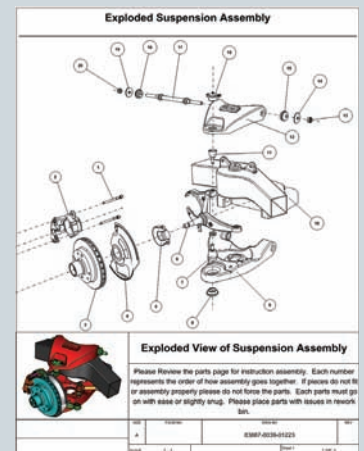
Author:
Layout design assets to communicate design processes. Associate design information using industry standard illustration methods.

Input:
Leverage design knowledge throughout the enterprise by referencing CAD data, images and drawing repositories, as well as product attributes.

Illustrate workflow

Publish:
Leverage illustrations in documents appropriate to usage. Illustrations and portfolios can be accessed interactively from Teamcenter, directly from the web or in hardcopy form.

View:
Enable consumers to review digital documents using the illustrate option web browsers, third-party viewers and hardcopy prints.



TEAMCENTER

www.siemens.com/teamcenter

SIEMENS

Lifecycle visualization illustrate

Features

- Add-on to Teamcenter's lifecycle visualization professional or mockup solutions. 3D geometry assets (3D snapshots including annotations and markups) are captured to the clipboard and remain linked to the original JT file. You can capture geometry assets from Teamcenter lifecycle visualization applications, such as realistic appearances from lifecycle visualization concept or results data from lifecycle visualization quality, and manage them with Teamcenter.
- Familiar Microsoft Visio authoring environment allows WYSIWYG drag-and-drop of 3D content plus rulers, grids, stencils and advanced alignment tools (Visio license not included).
- Technical illustrations include text, 2D and 3D graphics, annotations and tables.
- Portfolios include collections of technical illustrations and can contain consistent header and footer information as well as tables of contents. You can print or export to Visio, HTML and other formats.
- Callouts and the symbol manager (from Teamcenter lifecycle visualization) enable users to create and use custom icon and symbol libraries to meet company documentation standards
- Thrustline editor adds clarity for assembly instructions.

images, callouts and symbols, thrustlines, attributes and other design data managed by a PDM system like Teamcenter.

The illustrate option provides a revolutionary authoring environment that includes Microsoft's Visio system to aid in layout and the creation of re-usable templates. This environment provides the flexibility you need to create technical illustrations that meet most company standards.

Whether your company embeds its illustrations into technical publications using Teamcenter's content management authoring solution or publishes them for web consumption by the entire enterprise, the illustrate option enables users to view your valuable design assets from their familiar Teamcenter environment or standard web browser.

Integrated with the product development process

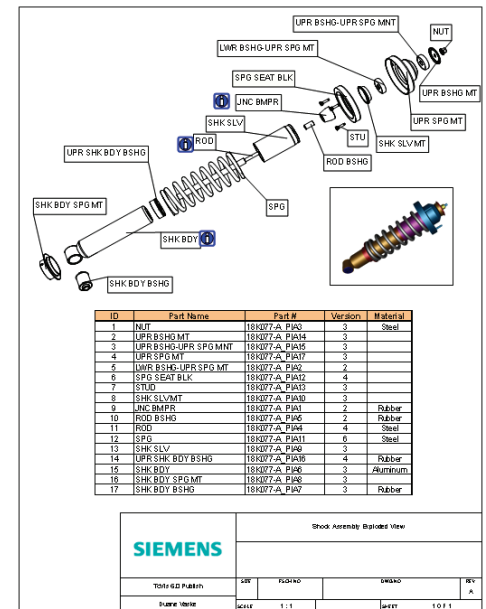
Where many companies simply use manual sketches, photographs or static snapshots to illustrate their technical publications, the illustrate option becomes an integral part of the design-build continuum by tying the process documents directly to the design knowledge developed throughout the process.

Creation of technical documents relies heavily on input from design teams and often must wait for designs to be completed or even prototypes to be built. Images are captured in several ways but often are output into different authoring environments for layout and text editing. In many cases, additional software applications and processes involve other handoffs that create breaks in the data stream that are difficult to update when changes occur.

Easily incorporate changes

The only consistency in design is change, and in the manual process described above, last-minute changes are very difficult to implement. Often, changes are not incorporated into final documents in time for product release; worse yet, sometimes they don't get implemented at all. The illustrate option delivers an integrated environment for authoring, viewing and maintaining technical illustrations that can be referenced by content management and managed by Teamcenter.

Because of the tight integration with Teamcenter, the illustrate option detects changes to any of the digital assets that have changed, updates those assets and implements those changes through a traditional change review process. This ensures that technical documents remain in sync with the products they represent without expensive, time-consuming rework.



Contact
Siemens PLM Software
Americas 800 498 5351
Europe 44 (0) 1276 702000
Asia-Pacific 852 2230 3333

www.siemens.com/teamcenter

© 2011 Siemens Product Lifecycle Management Software Inc. All rights reserved. Siemens and the Siemens logo are registered trademarks of Siemens AG. D-Cubed, Femap, Geolus, GO PLM, I-deas, Insight, JT, NX, Parasolid, Solid Edge, Teamcenter, Tecnomatix and Velocity Series are trademarks or registered trademarks of Siemens Product Lifecycle Management Software Inc. or its subsidiaries in the United States and in other countries. All other logos, trademarks, registered trademarks or service marks used herein are the property of their respective holders.
X3 5331 2/11 C